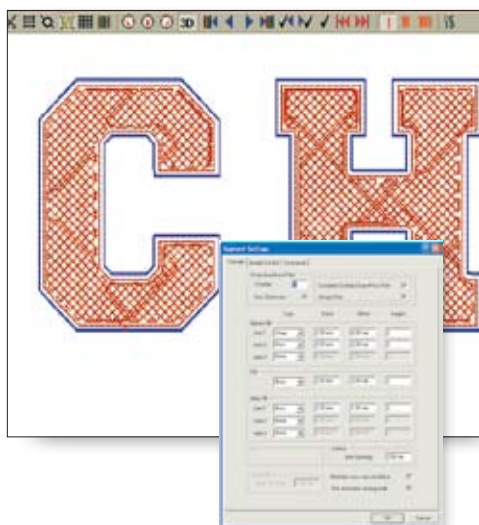


Chenille



RAISE YOUR EMBROIDERY ABOVE THE ORDINARY

Chenille embroidery is textured embroidery that is created by forming loop stitches on the top side of the fabric being embroidered. Using wool, cotton, or acrylic yarns, it creates a unique texture that sets your embroidery apart from common, everyday embroidery designs.



With the Tajima DG/ML by Pulse Chenille option, you can apply Lattice, Spiro, Moss or Chain walk to any segment and quickly transform original artwork into creative Chenille embroidery. Automatic sequencing of Chains and Mosses for shapes with holes minimizes travel stitches, so you have cleaner designs that run perfectly on machines. Automatic filtering of stitches ensures that stitch angles are always less than 60 degrees for optimal machine operation.

The Chenille option includes 5 expertly digitized fonts: Chenille 2 Color Block, Chenille Script, Chenille Phoenix Script, Chenille Block, and Chenille Full Block. In addition, the inclusion of the Shape Artwork feature lets you easily create connected script lettering.

The automatically generated *.CCO file saves time as you do not have to manually set Moss and Chain heights or the needle sequence on the machine.

**It's never been so easy to create beautiful
Chenille embroidery.**

Note: Chenille lettering, with no design creation, is also available as an option.

FOR MORE INFORMATION, CONTACT YOUR TAJIMA DISTRIBUTOR

Specifications are subject to change without notice. ©Copyright 2009 Pulse Microsystems Ltd. All rights reserved.